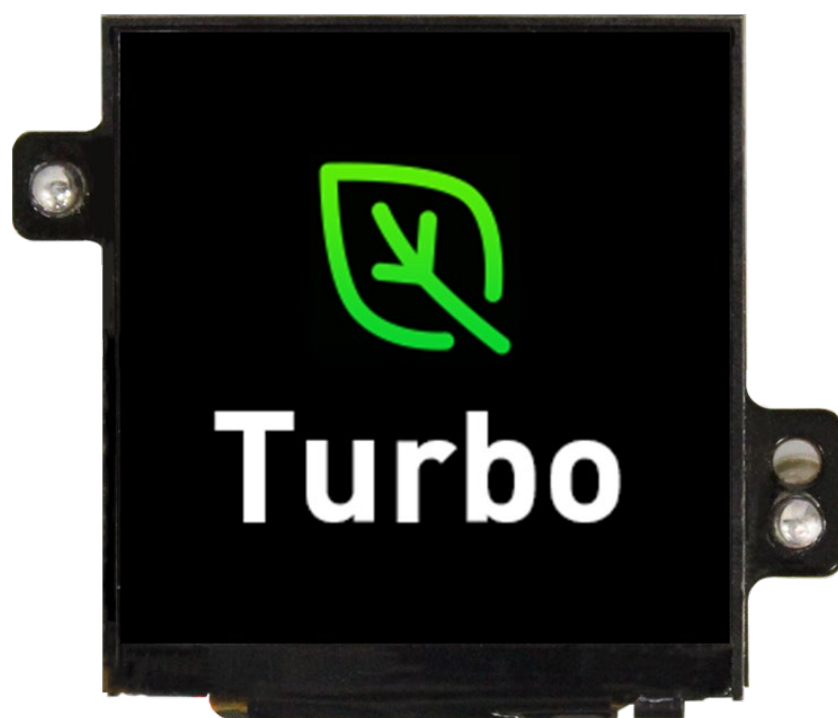


Smart Panlee

Smart Serial LCD Display

ZX1D54NE05S-2424



Features:

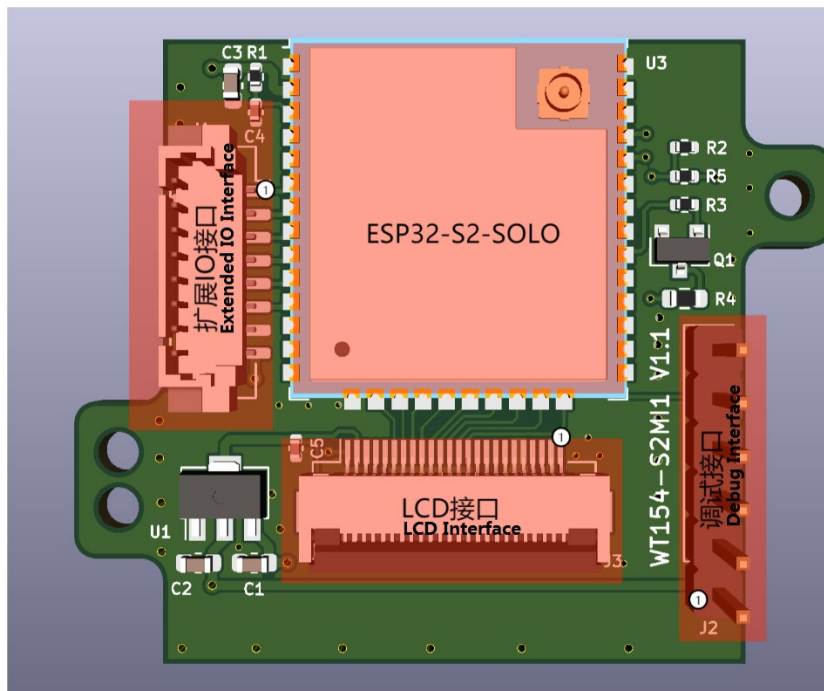
1. Support rapid prototyping
2. ESP32-S2-SOLO-U(16MB)

Core Materials (Tab. 0):

No.	Name	Model	Remark
1	ESP32-S2 module	ESP32-S2-SOLO-U	
2			
3			

Hardware Interface:

Hardware Interface Diagram:



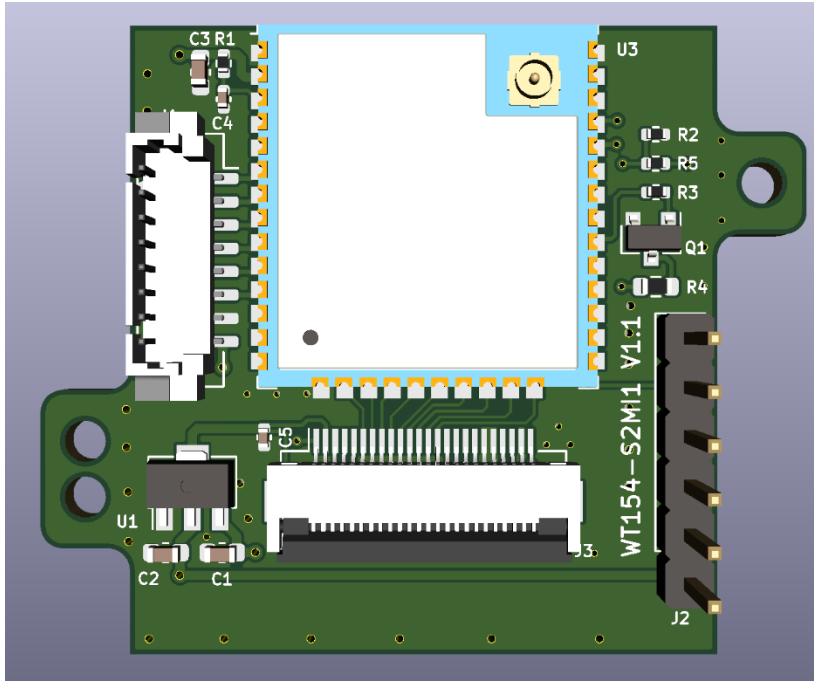


Fig.1 Hardware Interface

Interface Description:

[1] Debug Interface (Tab.1)

Pin	Description	Module Pin	Voltage Range	Remark
1	+3.3V	-	3.3V	
2	DEBUG_TXD	TX0	TTL	
3	DEBUG_RXD	RX0	TTL	
4	EN	EN	3.3V	
5	IO0	IO0	3.3V	
6	GND	-	-	

[2] Extended GPIO and Serial Interface (Tab.2)

Pin	Description	GPIO	Voltage Range	Remark
1	EXT1	6	3.3V	Extended GPIO
2	EXT2	7	3.3V	

3	EXT3	15	3.3V	Extended serial interface
4	EXT4	16	3.3V	
5	EXT_RXD(IO17)	17	3.3V	
6	EXT_TXD(IO18)	18	3.3V	
7	GND	-	-	
8	+5V	-	3.3V-5V	

[3] LCD Interface (Tab.3)

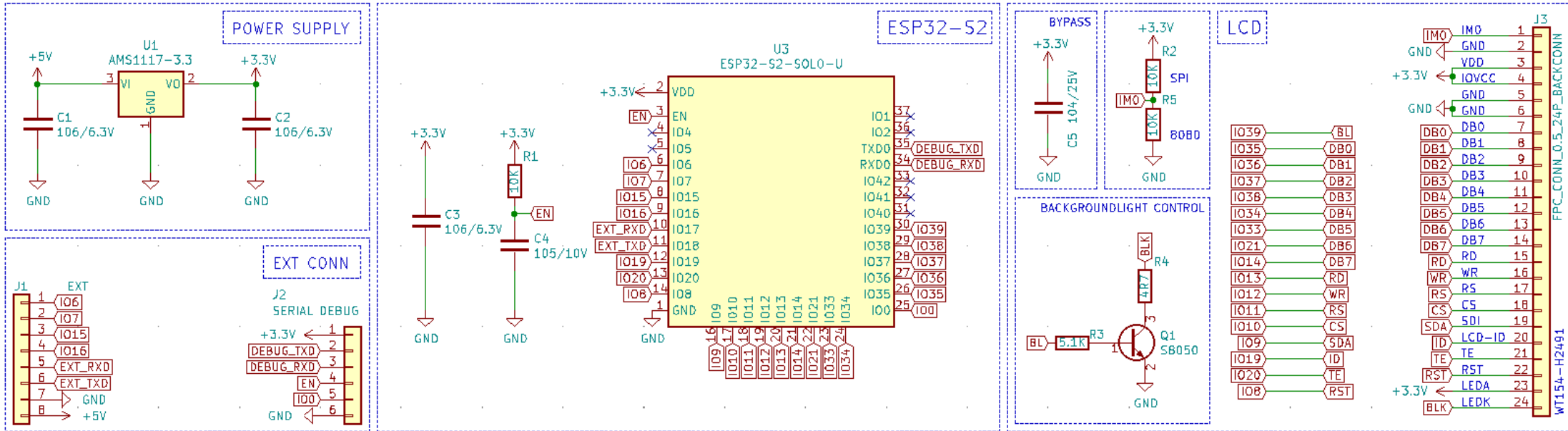
Pin	Description	GPIO	Remark
1	IM0	39	Interface selection 1=SPI 0=MCU8080
2	GND	-	Power pin
3	VDD	-	
4	IOVCC	-	
5	GND	-	
6	GND	-	
7	DB0	35	
8	DB1	36	
9	DB2	37	
10	DB3	38	
11	DB4	34	
12	DB5	33	
13	DB6	21	
14	DB7	14	
15	RD	13	Read enable
16	WR	12	Write enable
17	RS	11	Command/Data

18	CS	10	Chip select
19	SDI	9	SPI data
20	ID	19	TN/IPS identify
21	TE	20	Frame synch interrupt output
22	RST	8	Reset signal
23	LEDA	39	Backlight positive
24	LEDK	-	Backlight negative

Hardware Peripherals:

Peripheral Name	Description
LCD	240X240 1.54" IPS

Schematic:



Specification Parameters:

[1] LCD Parameters (Tab.4)

Display Type	LCD
Driver IC Model	ST7789
Viewing Angle	FULL
Resolution	240*240
Interface	MCU8080/SPI
Color	RGB565
Backlight Mode	
Backlight Brightness	

[2] Touch Parameters (Tab.5)

Touchscreen Type	
Driver IC Model	
Interface	
Touchscreen Structure	
Touch Mode	
Surface Hardness	

Outline Dimensional Drawing (Fig.2)



Contact Us

URL: [http://www. panel-tag.cn/](http://www.panel-tag.cn/)

E-mail: panlee@smartpanle.com

Get Samples: <https://shop212317088.taobao.com/>

Wechat Official Account: Smartpanle

